

ASID

ICON

Success
Strategies for
Interior
Consultants

Finding Opportunities Public Structures in Need of Renovation

● **Coping With Success**
How to grow your business

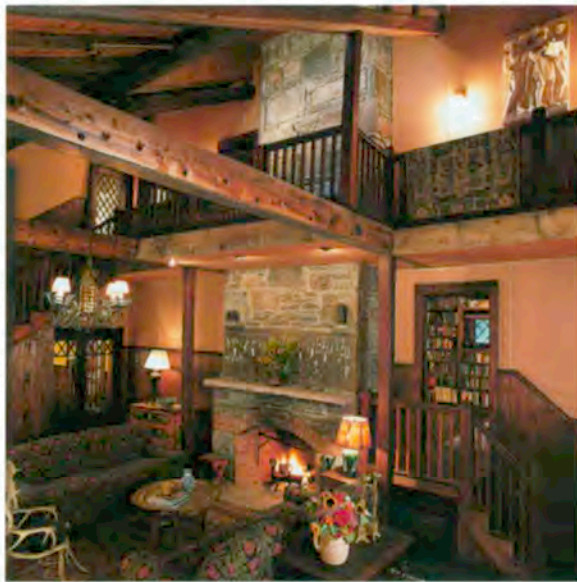
● **Financing Your Future**
Securing a loan to expand
your business

● **Preserving the Past**
Alternative materials for
restoration projects

alternative materials

Looking to the Past for New Ideas

By JULIE WARREN



Renovated interior and exterior of Witchwood in the Onteora community. Design by Iliana Moore, Allied Member ASID, Columbine Design. Photos by Stephen Mays.



Caned walls in Bundy house master bedroom by Iliana Moore, Allied Member ASID, Columbine Design.

Wall Coverings for Rustic Restorations

Iliana Moore, Allied Member ASID, was asked to restore "Witchwood," a circa 1890 house located in the northern Catskills community of Onteora. Houses in the community, founded by Candace Wheeler in 1887, were originally built as summer homes, and the severe winters and rustic construction, as well as age, have taken a toll on the structures. When Moore began the project three years ago, Witchwood was in serious disrepair from being unoccupied and abandoned for more than 20 years. Earlier renovations in the 1930s and 1970s had compromised the integrity of the structure to the point that the bedroom floor had fallen seven inches and the chimney fireplace had slid to a 30-degree angle, threatening to pull down the entire house.

Still, the homeowners and Moore saw the value in restoring the home not only for its extraordinary location and view, but also



for its history. Moore describes the hallway stair partition of Witchwood as a "guest-book of famous people." Well-known artists and writers such as John White Alexander and Mary Mapes Dodge added their signatures to this wall when visiting the house.

In the process of removing the "1930s hospital-green beaver board" from the liv-

ing room, Moore discovered the walls had originally been covered with rough burlap, a commonly available and economical wall covering for homes in the community. In the Witchwood restoration, Moore chose to echo the look of the original burlap with a finer textured material by covering the walls above the chair rail-height, dark bead-board with a burlap-colored linen from Christopher Hyland.

Other easily available materials such as logs, roots and caning were also used as surface and finish materials in houses in the region. Candace Wheeler even used packing material from groceries imported into the area from the Far East to cover walls in "Pennyroyal," her own home in Onteora.